

# REVISION HISTORY

Refer to the DCA and associated markups for a complete description of the changes incorporated in a revision.

REV	DCA	DATE	DRAWN	CHECKED	APPROVED	PUBLISHED
A	W14038	7-22-14	John Rodriguez	Dave Salt	Walt Rupp	Linda Andujo



**THIS DOCUMENT CONTAINS PROPRIETARY INFORMATION.**

NEITHER RECEIPT NOR POSSESSION OF THIS DOCUMENT CONFERS ANY RIGHT TO REPRODUCE, USE OR DISCLOSE, IN WHOLE OR IN PART, ANY INFORMATION CONTAINED IN THIS DOCUMENT WITHOUT WRITTEN AUTHORIZATION FROM WULFSBERG ELECTRONICS.



Chelton Avionics, Inc.  
*dba Wulfsberg Electronics Division*  
 Prescott, AZ

CAGE  
 CODE  
**1WZE2**

A *PRINTED* COPY OF THIS DOCUMENT MAY NOT BE THE LATEST REVISION.  
 IT IS THE **USER'S RESPONSIBILITY** TO ENSURE THAT HE OR SHE IS USING THE LATEST DOCUMENT REVISION.  
 THE LATEST REVISION MAY BE VIEWED OR PRINTED FROM THE ELECTRONIC DOCUMENT DISTRIBUTION SYSTEM.

DOCUMENT TITLE  
**INFORMATION BULLETIN, CIB CTR-352-02 BECKER 422 CONFIGURATION**

SIZE <b>A</b>	LRU <b>CTR-352</b>	DOCUMENT NUMBER <b>150-043905</b>	REV <b>A</b>
------------------	-----------------------	--------------------------------------	-----------------

Typed signatures indicate approval. Handwritten signature approval of this document is on file at Wulfsberg Electronics, Prescott, Arizona.

SCALE: NONE      DO NOT SCALE DRAWING

# INFORMATION BULLETIN

EQUIPMENT: CTR-352

DATE: 07-22-14

NOTIFICATION NUMBER: CIB CTR-352-02

REVISION: A

## **1. Planning Information**

---

### **1.1 Compliance**

As required

### **1.2 Description**

The CTR-352 should be put into the Generic 429 mode for acceptance testing, see Figure 1. Upon successful testing in Generic 429 mode, and the customer requests Becker 422, the configuration is changed to Becker 422 mode, BXP6402. After reconfiguration to the BXP6402 no additional testing is required, perform a "Read Config" to verify the unit has been properly loaded within the Becker 422 setting.

If a unit previously passed in Generic 429 mode and is configured to Becker 422, it is acceptable to have the 422 test case fail."

### **1.3 Applicability**

Affects Part Number 400-047352-8000 identified with Serial Number:  
95963, 95965, 95958, 95961, 87255, 80671, 81888, 81889 and 81890

### **1.4 Reason**

The ATE does not have the software to communicate Becker 422 Protocol. However the same hardware that communicates Becker 422 also is used to communicate standard RS-422 and can be verified to work properly in Generic 429 mode.

### **1.5 Approval**

N/A, Non-FAA Component.

### **1.5 Recommendation**

Reference the component maintenance manual 150-047062, within section 2.Maintenance, 4. Configuration.

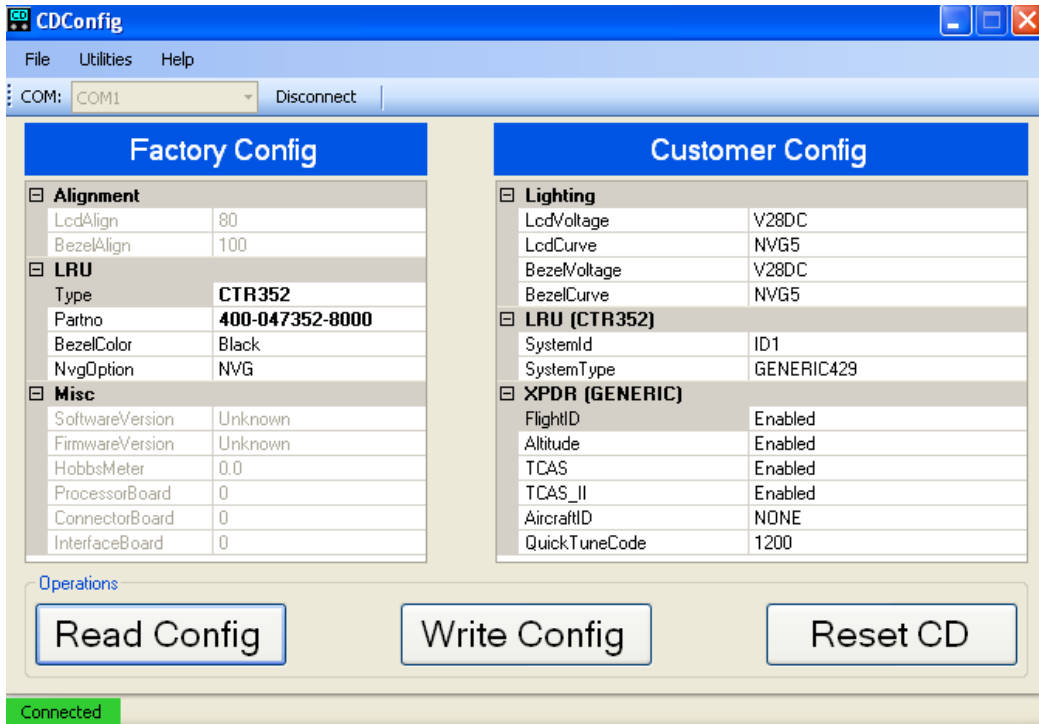


Figure 1

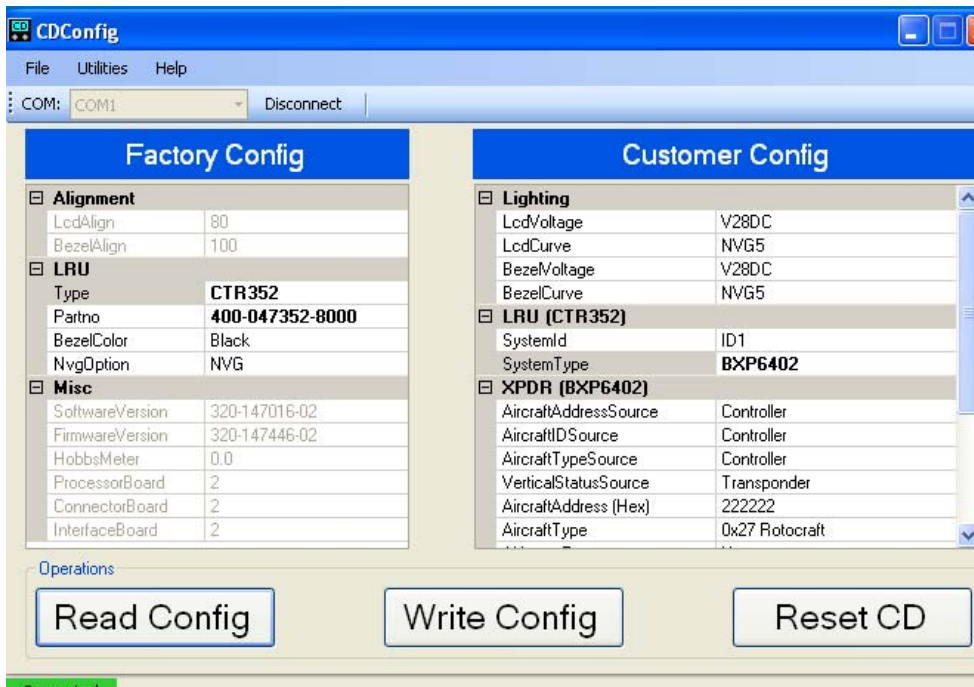


Figure 2